

## Case 4

60-year old male with unexplained, severe diarrhea

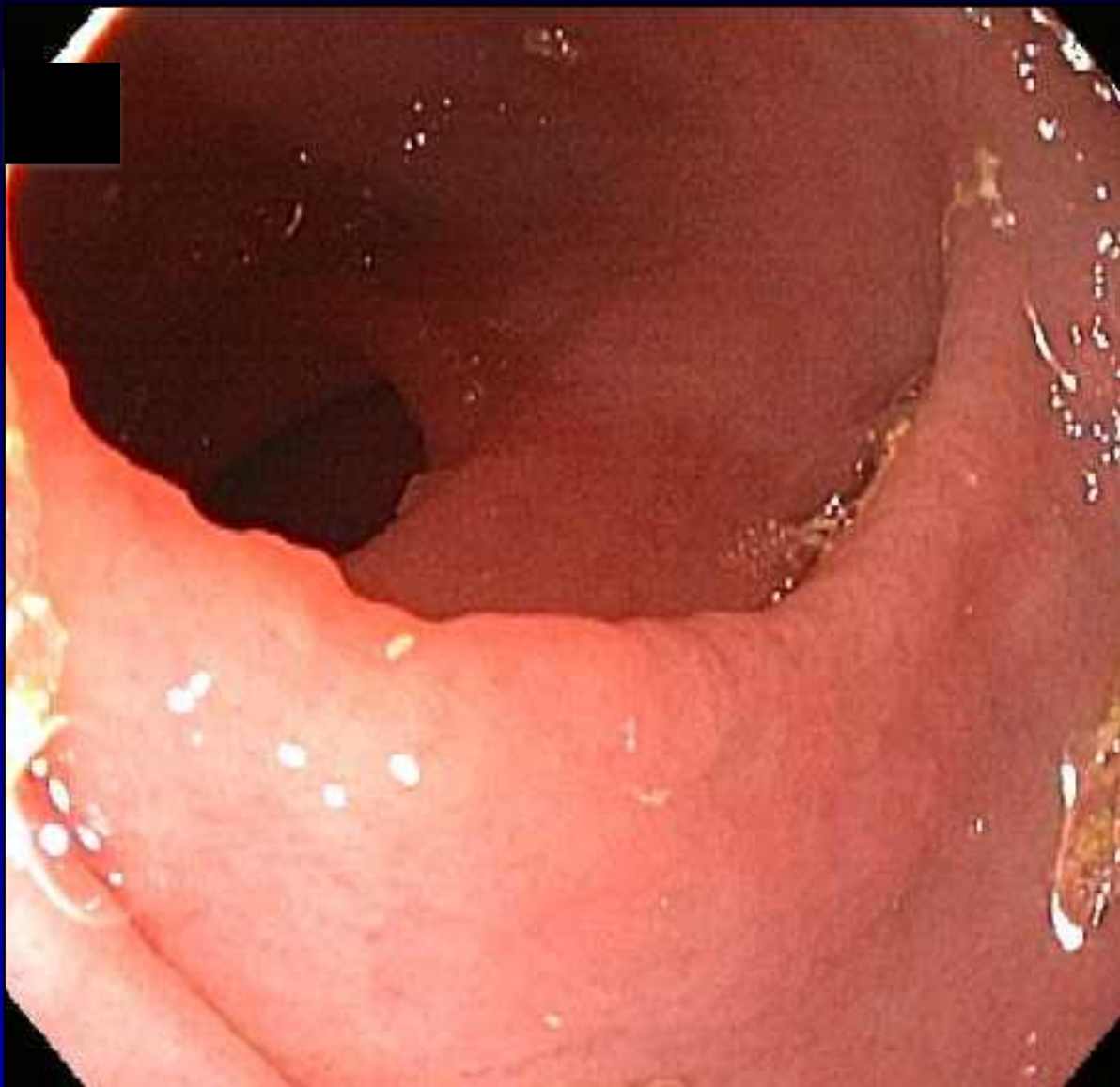
### Requisition

- Rule out IBD, microscopic colitis, celiac disease, amyloid, Whipple disease, etc.

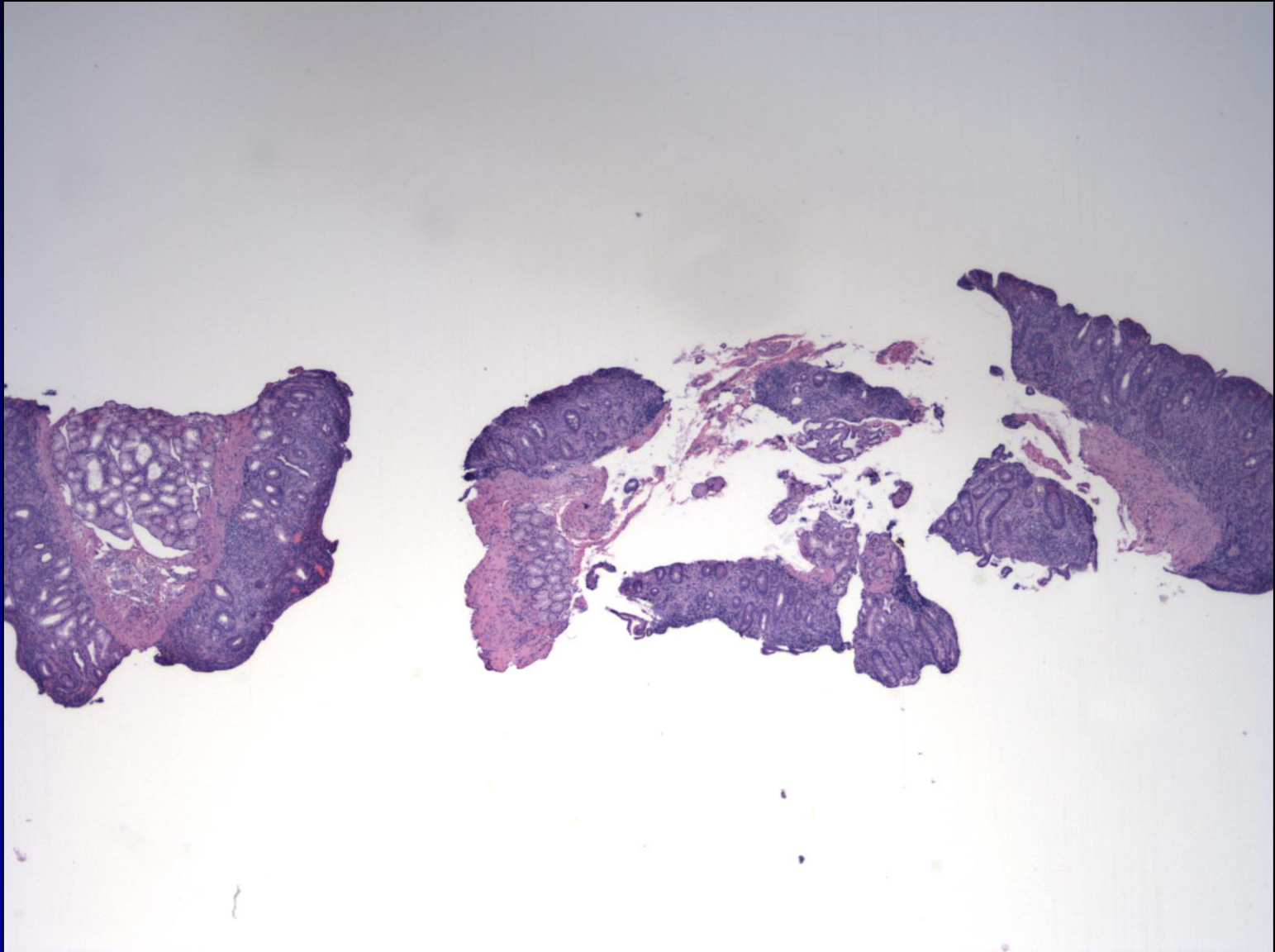
### Endoscopic findings

- Mild congestion of colonic and gastric mucosae
- Nodular duodenal mucosa with some scalloping of folds throughout

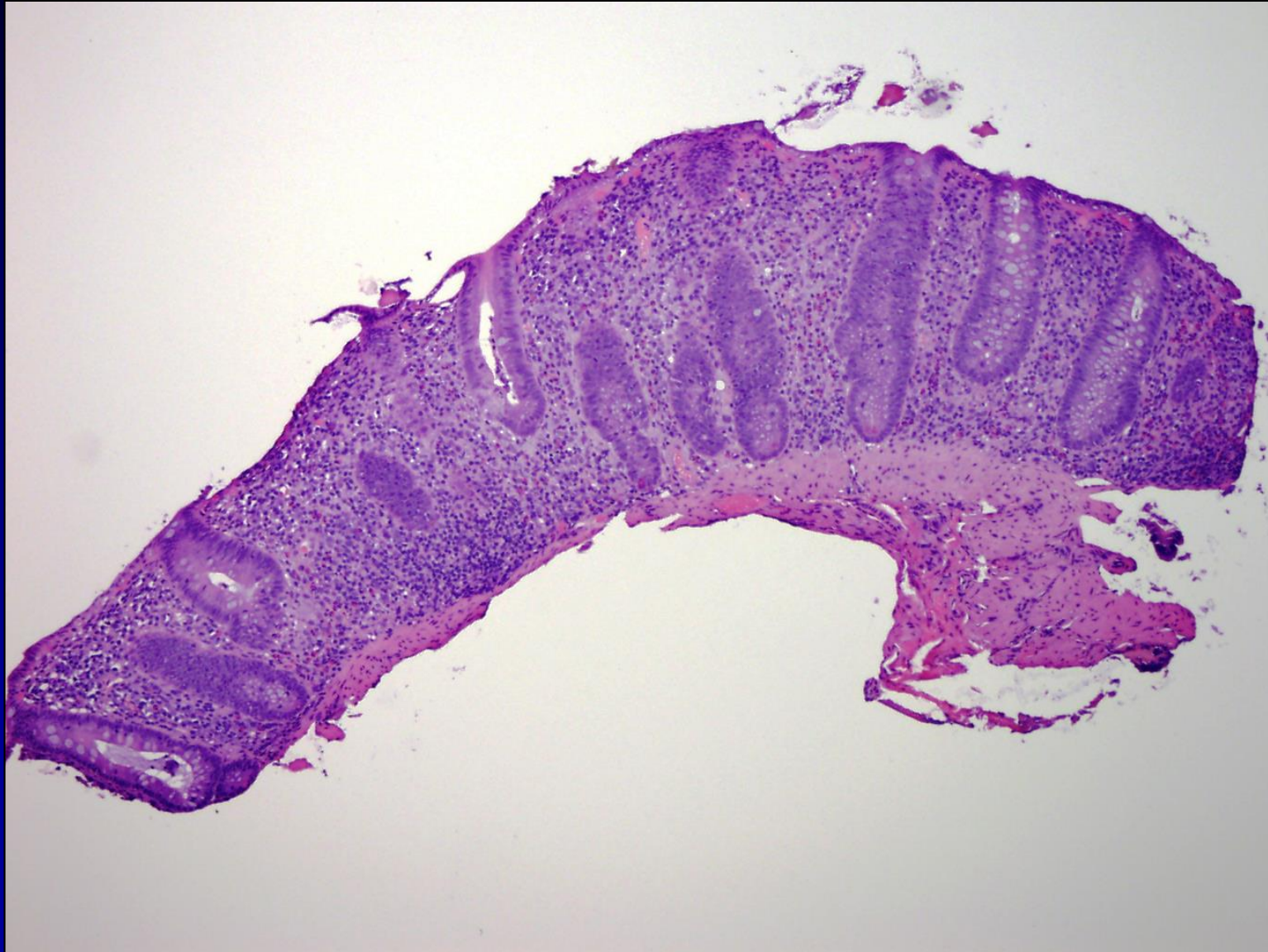
# Case 4-Duodenum



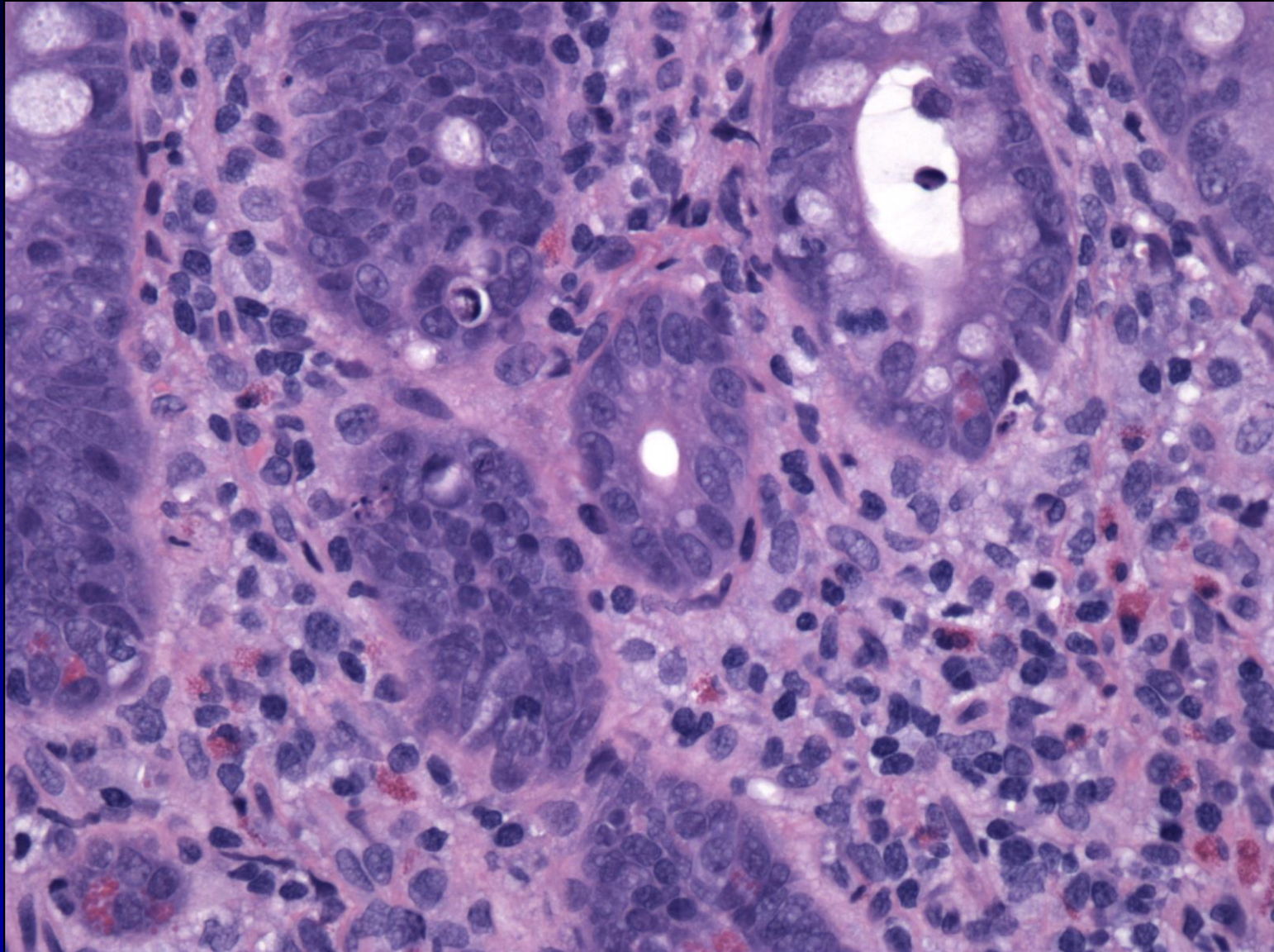
# Case 4-Duodenal Biopsy



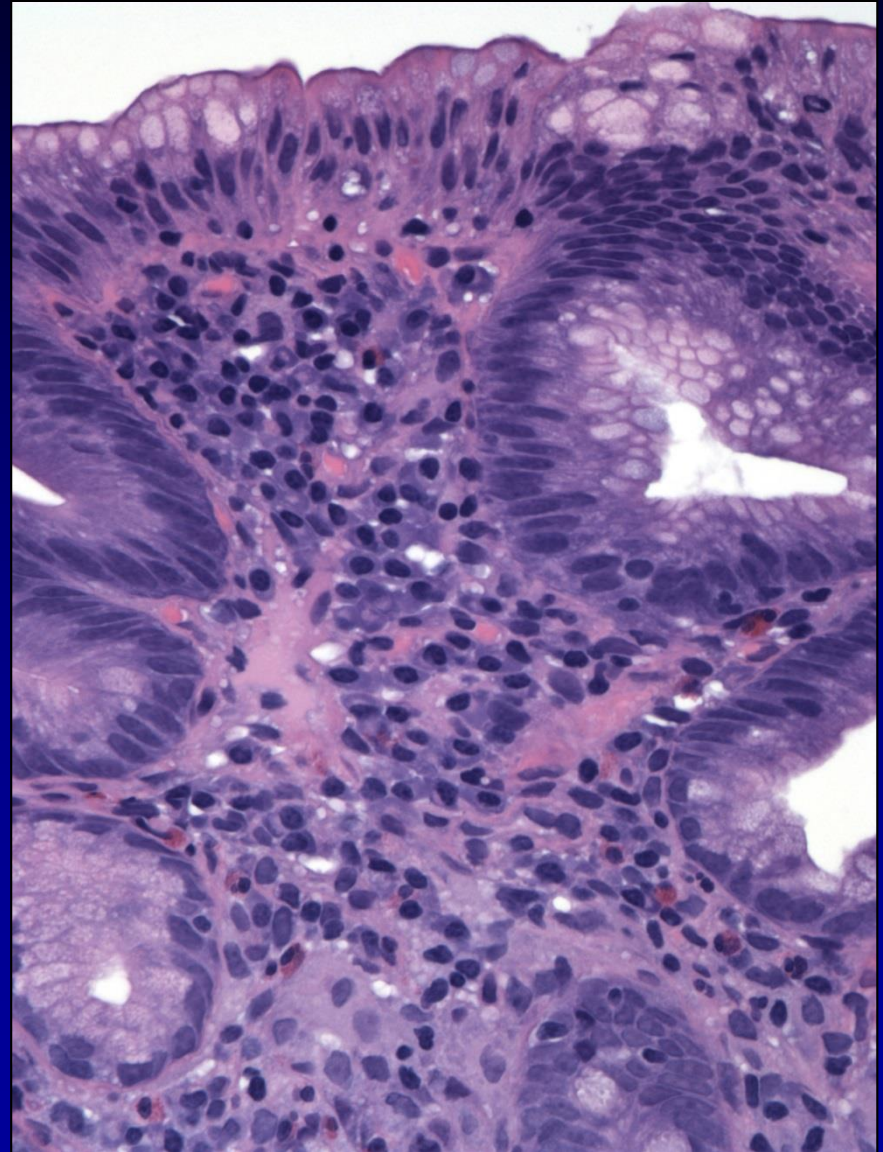
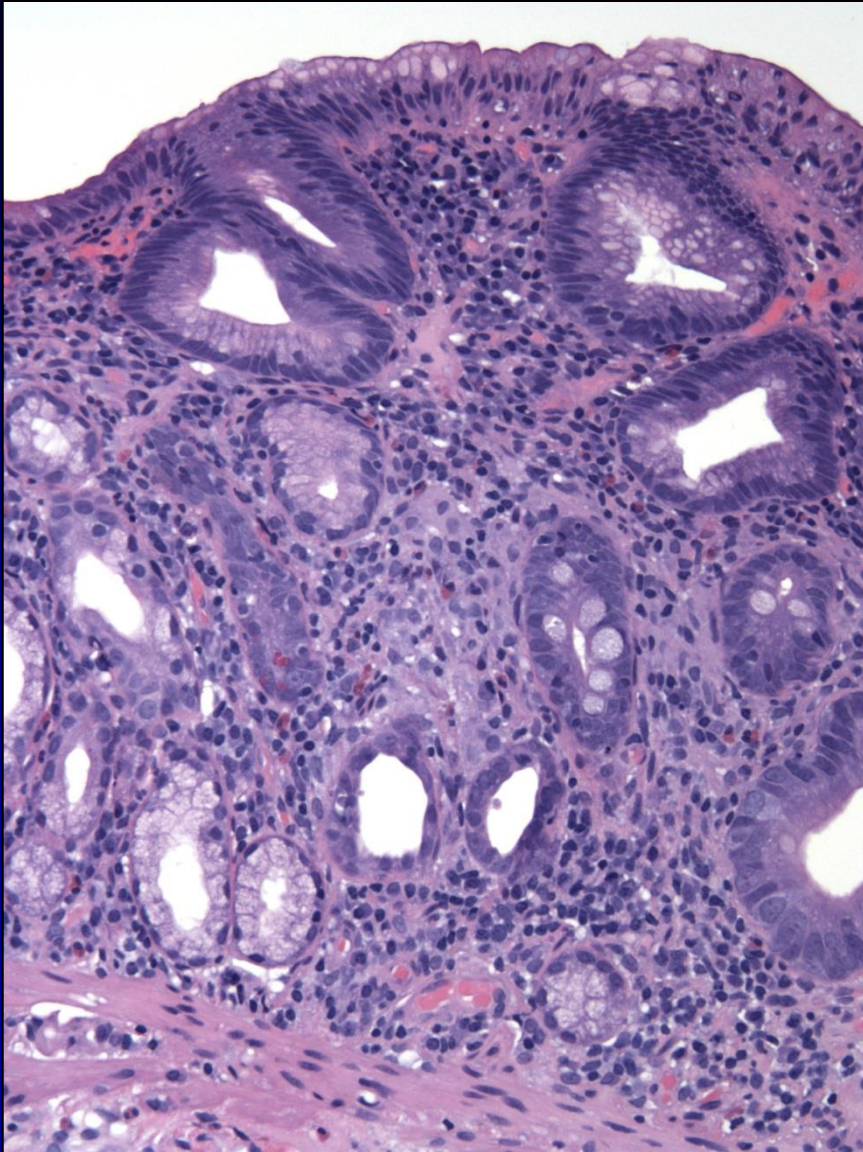
# Case 4-Duodenal Biopsy



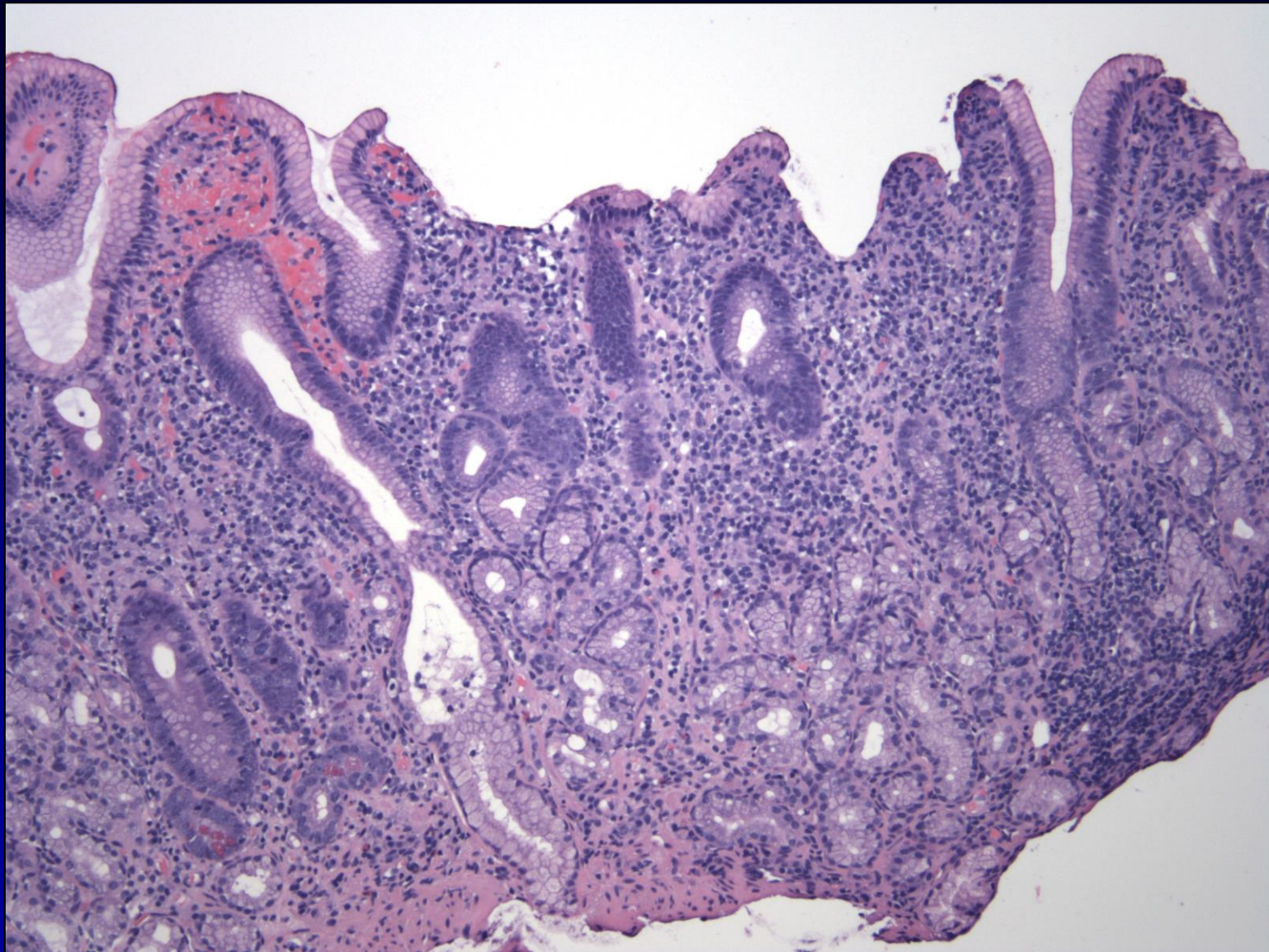
# Case 4-Duodenal Biopsy



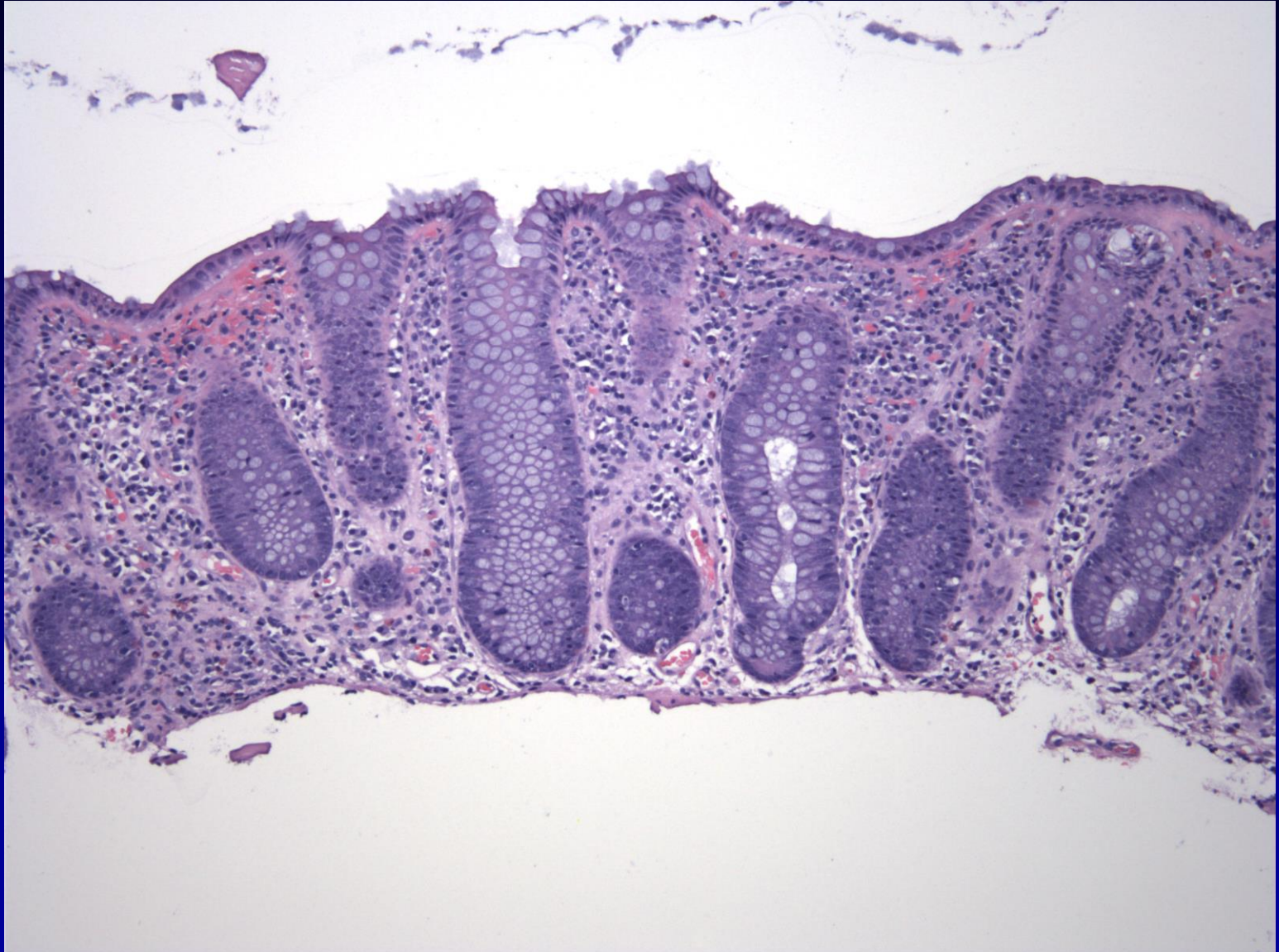
# Case 4-Duodenal Biopsy



# Case 4-Antral Biopsy



# Case 4-Colonic Biopsy





# Case 4-Colonic Biopsy

