

Case 2

7-year old male with abdominal pain

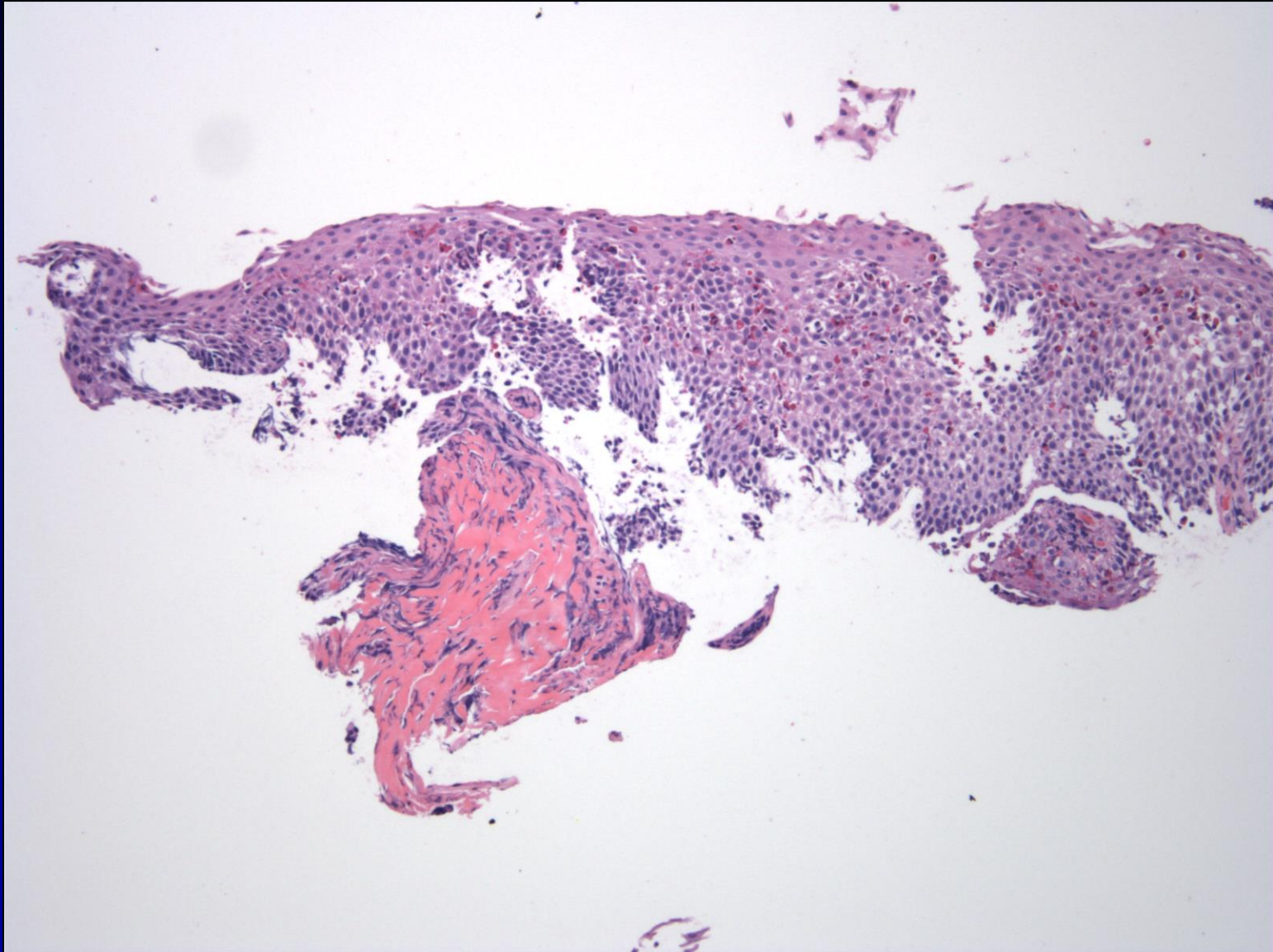
History of gastroesophageal reflux disease,
unresponsive to acid suppression

Rule out eosinophilic esophagitis

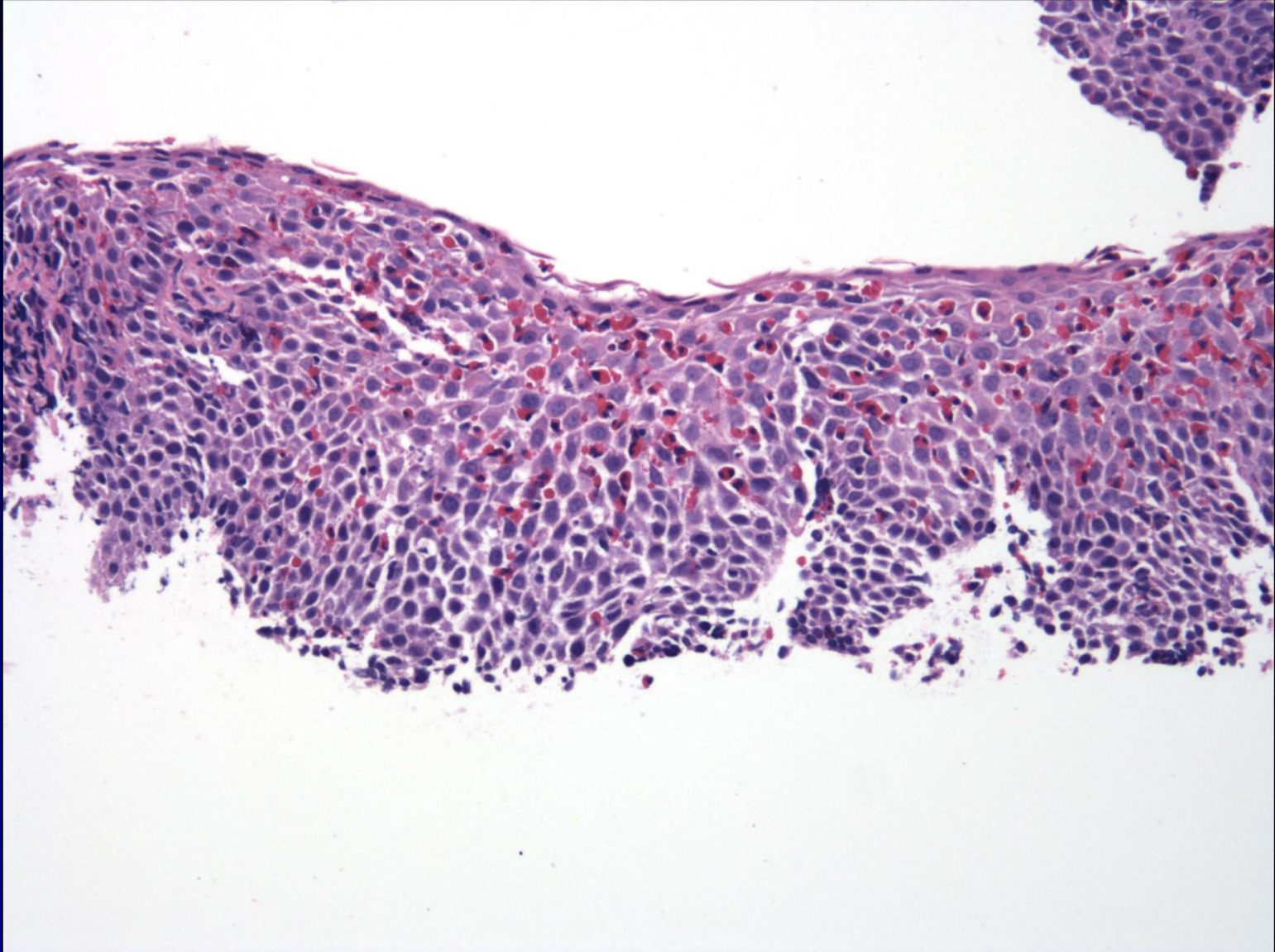
Case 2-Mid Esophagus



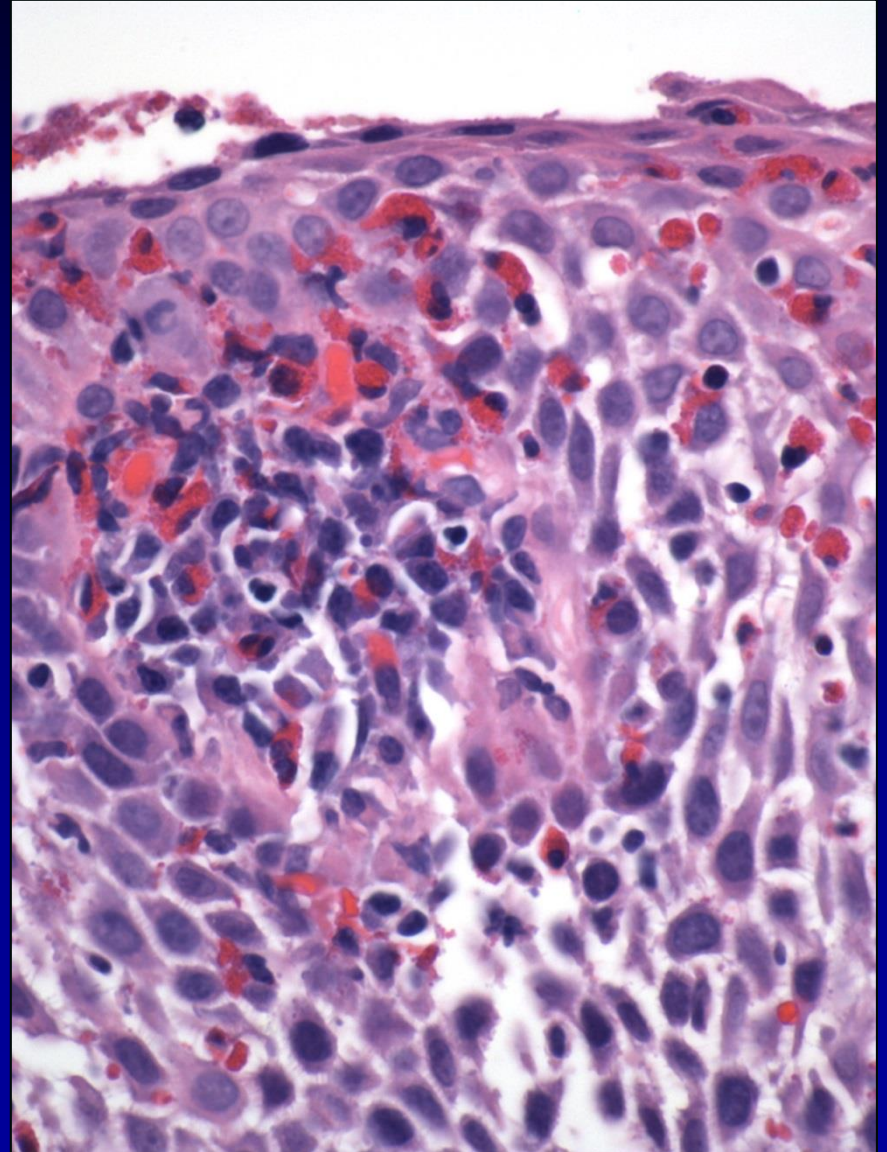
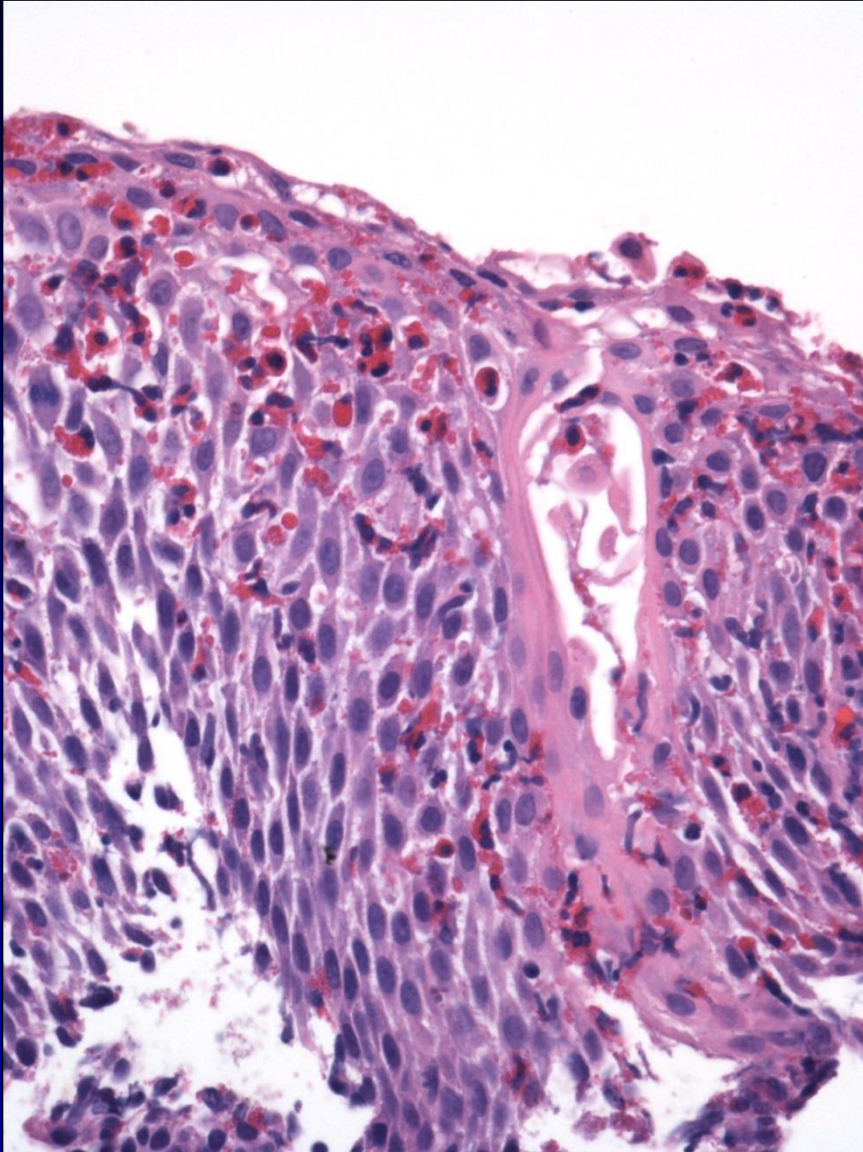
Case 2-Esophageal Biopsy



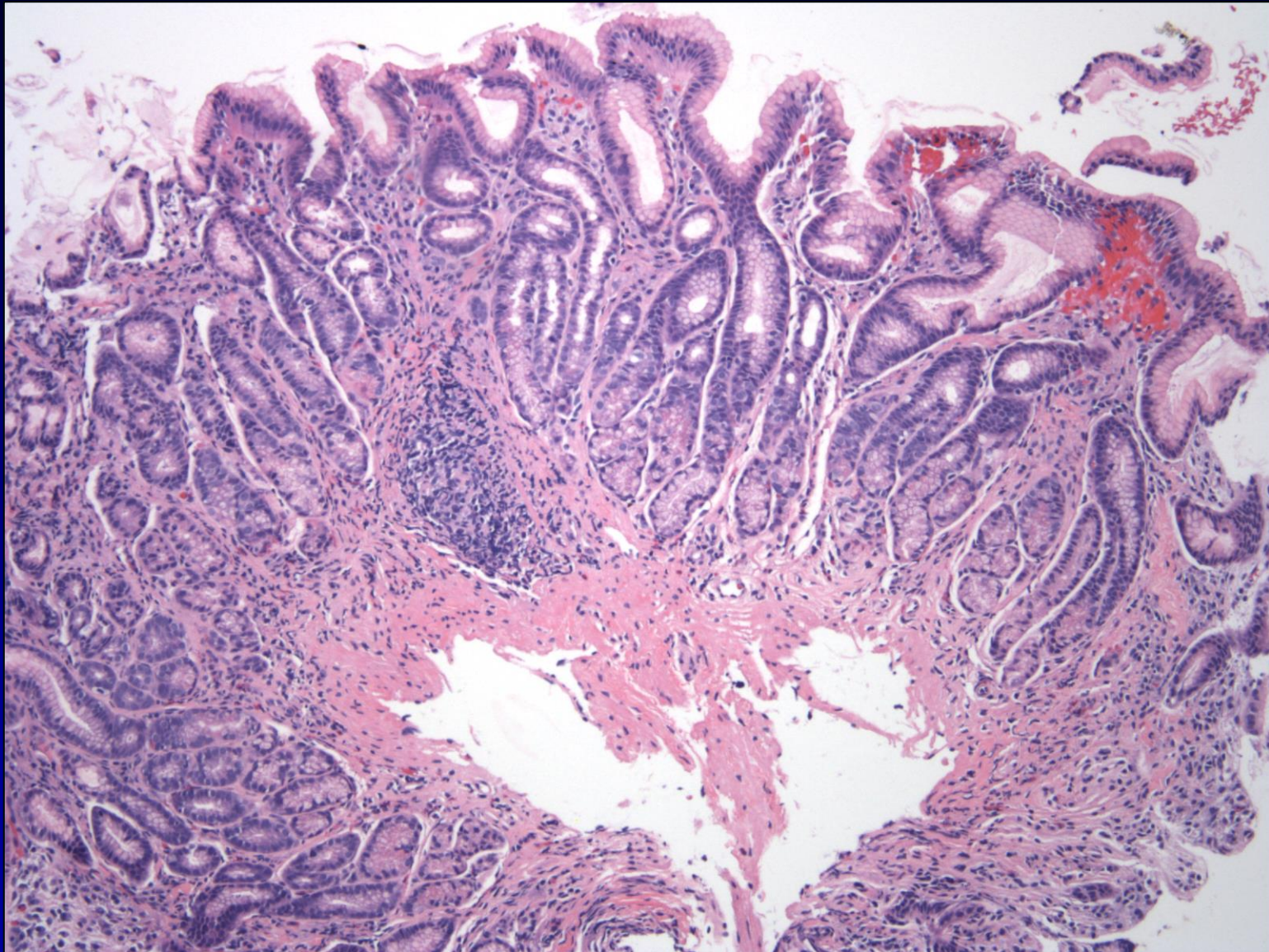
Case 2-Esophageal Biopsy



Case 2-Esophageal Biopsy



Case 2-Stomach Biopsy



Case 2-Stomach Biopsy

